

CSI CHOICE

CENTRAL PENNSYLVANIA CHAPTER

CONSTRUCTION SPECIFICATIONS INSTITUTE

Volume 41, No. 10

June 2005

ANNUAL CHAPTER AWARDS and MEMBER APPRECIATION BANQUET

Tuesday, June 14, 2005

"A Regional Approach to Economic Development"

By Mr. David E. Black, of the Harrisburg Region Chamber and CREDC

Join us for this annual event honoring special achievements of our members and the volunteers that keep our chapter running smoothly, furthering the goals of the Construction Specifications Institute. Spouses and guests are welcome to attend!

Prior to the presentation of Chapter awards, Mr. David E. Black, President & CEO of the Harrisburg Regional Chamber and Capital Region Economic Development Corporation (CREDC) will speak. These organizations coordinate events and projects, facilitate volunteer efforts, and administer programs that enhance our region's business, community and economic development and quality of life.

RADISSON HOTEL

Camp Hill, PA

Attitude Adjustment starts at 6:00 p.m. Dinner starts at 6:30 p.m.

Cost - \$22.00 per person. Students - \$11.00

Open Bar courtesy of Central Pennsylvania Chapter

MENU:

Petite Filet Mignon and Crab Cake. Italian Wedding Soup, Garden Salad, Chef's Side Dish
White Chocolate Chambord Cheesecake, Coffee, Tea, Warm Rolls, Butter

Low Fat or Special Dietary menus are available upon request.

See inside article FROM THE CHEF'S TABLE for further details.

Reservations must be made to Jeff Turicik either by e-mail jeffturicik@ykk-api.com or by calling (717) 763-6818. Guests are welcome. YOU MUST CALL IN RESERVATIONS OR CANCEL STANDING RESERVATIONS BY **FRIDAY, NOON, JUNE 10, 2005**. ALL NO-SHOWS WILL BE BILLED.

All members are welcome to attend the Board Meeting – 5:00 p.m.

At the RADISSON HOTEL ON JUNE 14, 2005

All material **MUST** be in editor's hands no later than **August 25, 2005** for publication in the September 2005 issue of *Choice* and the website. Send to: Jeffery Lynch, 1475 Clover Road, Camp Hill, PA 17011, e-mail address: jl@murrayassoc.com.

The Construction Specifications Institute is a nation-wide nonprofit technical organization dedicated to the advancement of construction technology through communications, education, research and service. Founded in 1948, CSI provides a forum for architects, engineers, specification writers, contractors, suppliers and others in the industry.

Anyone who is concerned with construction specifications in any manner is invited to apply for membership. Contact Jeff Turicik, 5236 Strathmore Drive Mechanicsburg, PA 17050 Ph: 717-763-6818 Fax: 717-763-6818

The Central Pennsylvania Chapter Meets the Second Tuesday, Monthly except NO Meetings are held in July.

CHAPTER ADDRESS

P.O. Box 3504
Harrisburg, PA 17105
TELEPHONES

Secretary..... (717) 805-3533
Treasurer..... (717) 763-7212
Editor..... (717) 234-2581
Ads..... (717) 238-4910

CHOICE STAFF

Jeffery M. Lynch..... Editor
Jan E. Myers..... Advertising
Don Scroggs..... Roster

RESERVATIONS

Maria Weber
at (717) 651-2890
maria_weber@mcgraw-hill.com

Please Read Ads – They Support "Choice"

Chapter Website: <http://www.csicentralpennsylvania.org>

CHAPTER OFFICERS

Jeffrey Smith President
Stewart C. Cluck President-Elect
Jeff Turicik Vice President
John Cannon Secretary
Sidney J. Myers Recording Secretary
David Shaw Treasurer

DIRECTORS

Roger Herre 2 yr.
Jan Myers 2 yr.
Charles Beauduy 2 yr.
Jeff Snyder 1 yr.
Chris Atwood 1 yr.
Jake Burkholder 1 yr.

ADVISOR

Paul L. Brunski

EDITOR

Jeffery M. Lynch

COMMITTEE CHAIRS

ACADEMIC AFFAIRS

John Cannon..... 805-3533

ADVERTISING

Jan Myers..... 238-4910

ARCHIVES

John Morgan..... 767-6868

AWARDS

Jeff Snyder..... 747-5404

BUDGET/ FINANCE

Charles Beauduy..... 763-7212

BYLAWS

Dave Kyper..... 766-6906

CERTIFICATION

Paul Brunski..... 263-8464

EDUCATION

Don Scroggs..... 263-8464

ELECTRONICS

David Shaw..... 763-7212

EXHIBIT SHOW - CAMP HILL

Charles Beauduy..... 763-7212

EXHIBIT SHOW - LANCASTER

Larry Saylor..... 737-0402

HOSPITALITY

Maria Weber..... 651-2890

LONG-RANGE PLANNING

Paul Brunski..... 263-8464

MEMBERSHIP

Jeff Turicik..... 763-6818

PROGRAM

Chris Atwood..... 233-4556

PUBLICITY

William Deck..... 291-1077

ROSTER

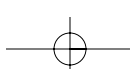
Don Scroggs..... 263-8464

TECHNICAL

Jake Burkholder..... 564-6860

INSTITUTE DIRECTORS

Brian Trimble, PE, CDT Salvatore Verrastro
(724) 776-1930 (610) 865-2621



President's Message



On behalf of the Chapter, I want to thank John McFee of OSHA for the presentation on jobsite safety. As the end of our fiscal year is fast approaching (the May 25th Golf outing and June awards program are our final programs for the year), I thank Chris Atwood and his Committee for all of the hard work for putting together all of the quality programs this year. As my term as President comes to an end, I thank the officers, directors and committees for the support they have given to me this past year.

I ask for your continued support to the incoming President Stu Cluck and his new board. I thank the membership for giving me the opportunity to serve as President of the Central Pennsylvania Chapter of CSI. It has been a rewarding experience and I look forward to continued involvement with the Chapter.

I look forward to seeing all of you at the June program and I hope all of you have a safe and enjoyable summer.

Sincerely,
Jeffrey M. Smith, CSI
President

MAY 2005 BOARD MEETING MINUTES

The Board of Directors of the Central Pennsylvania Chapter of the Construction Specifications Institute met at the Radisson Hotel, Camp Hill, PA, May 10, 2005. President Smith called the meeting to order at 5:15 p.m. Board members and committee chairs present were: J. Smith, Cluck, Turicik, Cannon, S. Myers, Shaw, Herre, J. Myers, Beauduy, Snyder, Atwood, Lynch, Morgan, Kyper, Scruggs and Weber. Absent were: Burkholder, Brunski and Brightbill.

President's Remarks: President Smith showed the board our Outstanding Chapter Commendation award that he received at the Institute Convention in Chicago. He then asked for a review of the April minutes. The minutes were approved on a motion by Cluck and second by Beauduy.

OFFICER'S REPORTS:

President: No reports.

President-Elect: President-Elect Cluck gave an update on the newly elected officers. Treasurer Beauduy would appreciate if someone else would take the treasurer's duties as he is overwhelmed as Chapter Director, Institute Director and chairman of the Institute Awards Committee. A search will be conducted to fill this position in time for the beginning of the next fiscal year.

Vice President and Secretary: No reports.

Treasurer: Treasurer Shaw submitted the April treasurer's report for review and acceptance. The report were accepted on motion by Cluck and second by atwood.

COMMITTEE REPORTS:

Academic Affairs, Archives, Advertising, Awards and Budget/Finance: No reports.

Bylaws: Chair Kyper stated if a vacancy (treasurer) occurs, the board would have to follow Article IV - Board, Section 8 in order to fill the position.

Certification: No report.

Education: Chair Scruggs stated he is developing plans and goals for next year.

Electronics: Chair Shaw deferred to Herre. Herre is to write an article for *Choice* to secure aims and goals for use on a web site.

Exhibit Show - Camp Hill: No report.

Hospitality: Chair Weber reported twenty-four (24) signed for tonight's meeting.

Long Range Planning: No report.

Membership: Chair Turicik reported the chapter membership consists of 147 total membership of which 139 are just our chapter members. To date, nine new members have joined this year.

Program: Chair Atwood reported he is trying to obtain Chuck Rhodes for the June meeting.

Publicity: No report.

Roster: Chair Scruggs has updated the roster. If any requests a copy he will e-mail one.

Technical: No report.

2004 Middle Atlantic Region Conference: Chair Beauduy stated he is working on a final report.

OLD BUSINESS:

Herre reported the committee did report to the board with no action taken and no funds proposed in the preliminary budget to finance the setting up of a new web site. After much discussion the board decided to have a committee, headed by Herre, dwell into what should be on the web and how it can be utilized. It is anticipated that the members will respond to an article which Herre will publish in *Choice*.

Beauduy anticipates that the Budget/Finance Committee will soon recommend an investment strategy for the chapter plus resolve why we are using two different banks for our checking and savings account. The checking account has been assessed service fees and the savings account interest is very low.

NEW BUSINESS:

Because revenues have decreased in our non-dues activities (Exhibit Shows), the Budget/Finance Committee suggested raising the dues for those paying \$30 chapter dues to \$35. Motion was made by Beauduy and seconded by Cannon to raise Professional and Industry member dues to \$35 per year. Motion carried.

The meeting was adjourned at 6:15 p.m.

The next board meeting will be held Tuesday, June 14, 2005 at 5:00 p.m. at the Radisson Hotel, Camp Hill, PA.

Respectfully submitted,
Sidney J. Myers, PE, RA, CSI, CDT
Recording Secretary

FROM THE CHEF'S TABLE

We will try to accommodate special requests such as low fat or low sodium selections. A fresh fruit plate, instead of the Chef's Dessert Selection, is always available by request. Special request menu reservations should be made no later than the Friday prior to the Tuesday meeting.

Please feel free to forward either your comments regarding your meal, or any suggestions that you feel could improve the CSICPC Dinner, to: maria.weber@mcgraw-hill.com.

Maria Weber
Hospitality Chair

Please notify the Chapter Electronics Committee if your e-mail address has changed, if you have found your e-mail listing in the Chapter Roster to be incorrect, or if you would like to receive e-mail notifications throughout the year and are currently not receiving any.



WWW.SHERWIN-WILLIAMS.COM

The Sherwin-Williams Company
357 Northgate Drive, Suite #6
Warrendale, Pennsylvania 15086
(724) 933-1900 X 104
FAX: (724) 933-1990
e-mail: swgeist@aol.com

1 (800) 321-8194
Architectural Hotline

James Geist, CSI
Architectural Consultant

SPEAKER BIOS

As President & CEO of the Harrisburg Regional Chamber, **DAVID E. BLACK** oversees all operations of the Harrisburg Regional Chamber and Capital Region Economic Development Corporation (CREDC). Since taking this position in July of 2001, he has recruited a quality team and re-focused the organization. The organization has experienced substantial growth, developed a solid reputation for quality events, member services, and developed over \$15M in economic development projects.

Before joining the Chamber, Dave served in the administration of Governor Tom Ridge as Chief Operating Officer of Team Pennsylvania. He served five years as Deputy Secretary in the Department of Community and Economic Development (DCED), where he led the development and implementation of several innovative programs including the Keystone Opportunity Zones. Prior to DCED, he served as Acting Secretary and Deputy Secretary in the former Department of Community Affairs (DCA), which he played a leadership role merging DCA programs with the Department of Commerce to form DCED. Prior to joining State Government, he served as Vice President of First American Municipals, an investment banking firm specializing in public financing headquartered in Bucks County.

Dave is native of Clarion County in Northwestern Pennsylvania where he was heavily involved in regional economic development activities in counties throughout western Pennsylvania. He was first elected to countywide office at the age of 26 and successfully mounted three more countywide campaigns, serving for two terms as Chairman of the Clarion County Commissioners. Dave has a B.A. from Westminster College and did graduate work towards his M.S.A. in Public Administration at Slippery Rock University.

Dave and his wife, Shirley, reside in Cumberland County. They have two children, Erin, a teacher in the Susquenita School District and Jonathan, a student at Allegheny College in Meadville, PA.



Commercial Interior & Exterior Supply Co., Inc.
"SERVICE AT A COMPETITIVE PRICE"

109 Millers Lane
Harrisburg, PA 17110
(717) 232-5825 Voice Mail x 127
1-800-339-1713
Fax (717) 232-2008

Other locations:
State College
Downingtown



GAF MATERIALS CORPORATION

EverGuard
ROOFING SYSTEMS

U.S. INTEC
"System Solutions...
Even For Roofing Extremes"

Division of BMCA

203 Tomahawk Drive
P.O. Box 39
Conestoga, PA 17516
Office: 717-872-1496
Fax: 717-872-1436
Cell: 717-575-8999
E-mail: wkinney@gaf.com

William C. Kinney
Manufacturer's
Representative

DO SOMETHING
Exciting
WITH CERAMIC TILE

4335 Lewis Road • PO Box 4585 • Harrisburg, PA 17111-0585
Howard Pryor - Director of Architectural Services
717-564-6860, Ext. 4213

Locations Also in
Dulles, VA, Linthicum, MD & Charlottesville, VA
CONESTOGATILE
www.conestogatile.com



Quality People means Quality Work

- Roofing & Roof Preventative Maintenance
- Concrete, Masonry Restoration & Repair
- Floor Wall & Deck Repairs & Overlays
- Sealants & Waterproofing

Houck
SPECIALTY CONTRACTORS

7464 Linglestown Rd.
Harrisburg, PA 17112
717-657-0212

www.houcks.com

BINK
Architectural
Partnership

LARRY E. SAYLOR, NCARB, AIA

133 South 32nd Street • Camp Hill, Pennsylvania 17011
717-737-0402
larry@bink.net • www.bink.net

Firestone
BUILDING PRODUCTS COMPANY

MATTHEW D. KNOUSE
Manufacturer's Representative

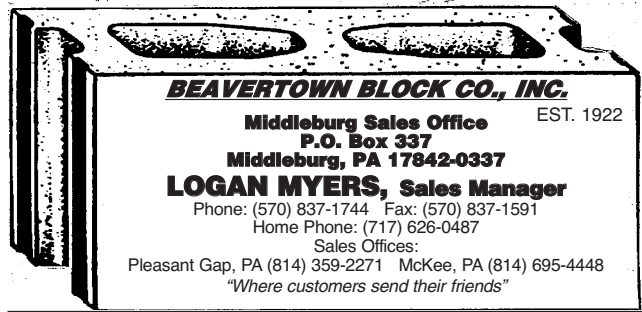
Performance Roofing Associates, Inc. TEL. (610) 594-6700
120 E. Uwchlan Avenue, Suite 202 (888) 594-6700
Exton, PA 19341 FAX (610) 594-6707
e-mail: mattk@performancerfg.com

A Complete Painting and Wall Covering Service



RALPH E. JONES, INC.
2240 Forster Street
P.O. Box 1933
Harrisburg, PA 17103
Phone 717-233-6444

JOHN PEIFFER



BEAVERTOWN BLOCK CO., INC.

Middleburg Sales Office EST. 1922
P.O. Box 337
Middleburg, PA 17842-0337

LOGAN MYERS, Sales Manager

Phone: (570) 837-1744 Fax: (570) 837-1591
Home Phone: (717) 626-0487

Sales Offices:

Pleasant Gap, PA (814) 359-2271 McKee, PA (814) 695-4448
"Where customers send their friends"

DEAN F. PIERMATTEI
ATTORNEY AT LAW

RHOADS & SINON LLP

OFFICE: (717) 233-5731
ONE SOUTH MARKET SQUARE DIRECT: (717) 231-6635
P.O. BOX 1146 FAX: (717) 231-6637
HARRISBURG, PA 17108-1146 E-MAIL: dpiermattei@rhoads-sinon.com

**Our community
commitments are
cast in concrete.**

**HEMPT
BROS., INC.**

concrete • asphalt • paving • excavation

Hershocks
Windows • Doors • Glass **INC.**

3501 North Sixth Street, Harrisburg, PA 17110
(717) 238-7331, Ext. 116 • Fax (717) 236-2972

Sales, Service & Installation Residential and Commercial

Seven

Roof Spec

Division

Product Specialists

Manufacturers' Representatives • Commercial Roofing Products

JIM KINGSBOROUGH

6 Wellington Court • Carlisle, PA 17013-4717 • 717-245-2696
Fax 717-243-1361 • roofspec2@aol.com



JOHN P. MORGAN, CSI
Regional Sales Manager

TRENWYTH INDUSTRIES, INC.

an Oldcastle® Company
P.O. Box 438
Emigsville, PA 17318
(800) 233-1924
(717) 767-6868
Fax: (717) 767-4023
Home: (717) 540-8069
Mobile: (717) 817-2036

TRENWYTH

EXTRA! EXTRA! READ ALL ABOUT IT!

One of the great challenges we face at the Institute is getting information to members in time for them to use it. We know you need advance notice to attend a professional development event, especially if it involves a few of your hard-won vacation days. That's why we've restructured the way we communicate with CSI members. Specifically:

- The monthly NewsDigest has become NewsDigest Quarterly, which is mailed to all CSI members every three months or so. Its mission is to report to you on the Institute's activities at the national level.

- CSI has launched CSI NewsBrief, a FREE, weekly e-mail that summarizes the most important news in the construction world, as reported by leading news sources such as The New York Times and Engineering News-Record. It also includes briefs and links to information about CSI that is posted on the Institute's website, www.csinet.org.

- CSI has created CSI Weekly, a new area of CSINet that is updated weekly (sometimes daily) with the latest information about CSI's programs and events, and news from CSI's chapters and regions.

What you get out of it

CSI recommends you read—OK, skim—these publications regularly to get more out of your membership. They can improve the return on your dues by getting information to you in time for you to use it.

Your membership increases in value every time you use the membership discount, meet a fellow CSI member who can help you find a better job, or attend an education program that can improve the way you do your job. You can't take advantage of these opportunities if you don't know when they're happening. These publications can help you stay up-to-date.

How to get it

As long as your records with the Institute are up-to-date, NewsDigest Quarterly will arrive in your mail, and you can visit CSI Weekly online at any

time. You must subscribe to CSI NewsBrief in order to receive it.

To visit CSI Weekly, go to www.csinet.org/csi-weekly.

To see a sample issue or subscribe to CSI NewsBrief, go to www.smartbrief.com/csi.

To see past issues of NewsDigest Quarterly, go to www.csinet.org/newsdigest.

Not getting the NewsDigest Quarterly? To update your contact information so that future issues of NewsDigest Quarterly come in your mail:

- Visit www.csinet.org.
- Log in through the login box that appears on every page of the website (click "forgot your password" if you forgot your password)
- Click "modify your profile"
- Click "update contact info"
- Click "business" or "home" depending on what you want to update

Make your membership worth every penny—find out what the Institute has planned, and how you can participate.

Got a question or a comment? CSI Communications Manager Joy Davis can be reached at jdavis@csinet.org or (800) 689-2900.

ABOUT THE 50TH ANNUAL CSI SHOW & CONVENTION IN LAS VEGAS

Many participants have already marked their calendars for The 50th Annual CSI Show & Convention in Las Vegas. "I can't wait until the next CSI convention, it was a blast!" participant Brian Forsberg, CSI, said.

CSI will post information for participants at www.csinet.org as it becomes available. The plans so far include:

- **A bigger education program.** CSI will continue to provide a year's worth of continuing education credit in one week through the Show & Convention. Among the topics that participants can expect to see in the program are Building Information Models, MasterFormat™ 2004 Edition, and Green Building.
- **CSI University.** The event will again co-locate with The Annual CSI Show & Convention. As information becomes available, it will be posted at www.csinet.org/csiuniversity.
- **The revamped Specifications Competition.** The competition was not held in 2005 to allow the Specifications Competition Committee to develop new categories that better address today's construction.
- **The 2nd Michelangelo Award.** For information on making a nomination, visit www.csinet.org/michelangeloaward.

CALENDAR OF EVENTS

June 14 Chapter Dinner Meeting & Awards Program with David Black
HRC & CREDC

July /

August Tour – TBD

Sept. 13 Chapter Dinner Meeting & Program - TBD

Oct. 6-9 Middle Atlantic & Great Lakes Bi-Region Conference – Seven Springs Mountain Resort, Champion, PA



404 S. 29th Street
Penbrook, PA 17103

PROFESSIONAL ROOFING CONTRACTORS

COMMERCIAL-INDUSTRIAL

Michael J. Bogar
President

717 232-0597
FAX 717 232-3163



Construction Sales Group, Inc.

Manufacturers' Representatives

Jim Harduk CSI, CDT

301 Oxford Valley Road
Suite 104A
Yardley, PA 19067

Ph: (215) 321-5300
Fax: (215) 321-5364
E-Mail: csgjim@aol.com

ARDEN Architectural
SPECIALITIES INC.



NELSON

PIRE

NEOGARD

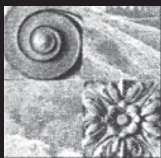
POLYDRAIN



**Strober Building
Supply Center, Inc.**

JAY MILLER
General Manager

3405 North 6th Street, Harrisburg, PA 17110
PH. 717-236-9425 • FAX 717-236-9413



**NOELKER AND HULL
ASSOCIATES, INC.**

ARCHITECTS AND
INTERIOR DESIGNERS

30 West King Street
Chambersburg, PA 17201
Phone: 717-263-8464
Fax: 717-263-6031
Email: info@noelkerhull.com
www.noelkerhull.com

**When you think of concrete
Think of Nitterhouse**

- Architectural Block
- NiCrete Brick
- Allan Block Retaining Wall
- Architectural Paving Stones
- Landscape products

Nitterhouse
masonry products, LLC

859 Cleveland Ave.
Chambersburg, PA 17201
717-267-4500
email: www.masonry@nitterhouse.com

LEW M. YOUNG
MANUFACTURERS' REPRESENTATIVE

535 Marsh Run Road
New Cumberland, PA 17070
717-774-4587



W. R. MEADOWS OF PA

2100 MONROE ST.
P.O. BOX 7550
YORK, PA 17405
717-792-2627

Tremco Incorporated
17 Beechwood Lane, Hershey, PA 17033



800-851-4085 Voicemail
800-628-7501 Office
717-534-2961 FAX
717-439-0566 Mobile
e-mail: rkline17@aol.com

Randal W. Kline, CSI, CDT
Senior Field Advisor

An RPM Company www.tremcoroofing.com



Jeanie M. Crowl
Administrator

**MASONRY CONTRACTORS ASSN.
OF CENTRAL PENNSYLVANIA**

P.O. Box 318
Elysburg, PA 17824
1-800-577-6801
570/672-9616
fax: 570/672-9618

MASONRYCENTRALPA@aol.com

ANDERSEN WINDOWS, INC.

ED METZGER, CSI
Architectural Representative

72 Dewalt Dr., Mechanicsburg, PA 17050
Tel 717-791-9495 Fax 717-791-9399
www.andersenwindows.com

**International
Masonry Institute**



Brian E. Trimble, PE

International Masonry Institute

Mid-Atlantic Region
300 Northpointe Circle, Suite 303
Seven Fields, PA 16046
Phone: 724-776-1930 Fax: 724-776-4963
1-800-IMI-0988
btrimble@imiweb.org
www.imiweb.org

MEMBER SURVEY

The publication of our monthly newsletter is a major expense, subject to continually rising costs of printing, correlating, and postage. Would you object to receiving the newsletter via email? Streamlining our web site to incorporate the newsletter would reduce the expenses incurred to publish the newsletter, along with the volunteer hours required for information gathering and editing. Of course, any members who do not have email would still receive a paper copy. There would be added startup costs to develop a web site to support the chapter's objectives, but in the long run will reduce volunteer hours, publishing costs, and time to publication. With your vote, please submit any suggestions that might benefit the chapter.

Reply by:

1. Email your answer to rpherre@epix.net
2. Fax your answer to 717-938-3644
3. Mail your answer to: R.P.Herre, 2585 Grandview Drive, York Haven, PA 17370

No reply will be counted as a yes vote!

YES _____ NO _____

SUGGESTIONS

1. _____
2. _____
3. _____
4. _____
5. _____



SKANSKA

William R. Long
Vice President
Mid-Atlantic Division

Phone 267 470 1000
Fax 267 470 1109

william.long@skanskausa.com

Skanska USA Building Inc.
516 Township Line Drive
Blue Bell, PA 19422
www.skanskausa.com

MANAGING

SPACE
SOUND
SIGHT

Modernfold/Central PA
WILLIAM R. BRIGHTBILL FCSI, CDT
Project Manager

302 Lori Drive
Harrisburg, PA 17112

Office: 717-540-9248
Fax: 717-540-9249

EXTERIOR / INTERIOR SYSTEMS CONTRACTOR
NOVINGERS INC.

1441 Stoneridge Drive, Middletown, PA 17057

717 / 930-0300



McCoys Bros Inc

GENERAL CONTRACTOR

Creative!

- Commercial
- Design-Build
- Ecumenical
- Industrial
- Institutional

1514 Commerce Ave., P.O. Box 7300 Carlisle, PA 17013
www.mccoysbrothers.com
717.241-2023

Quality
HARDWOOD FLOORS
CARPET- RESILIENT TILE

PVC - RUBBER FLOORING
RACQUETBALL/HANDBALL
COURTS

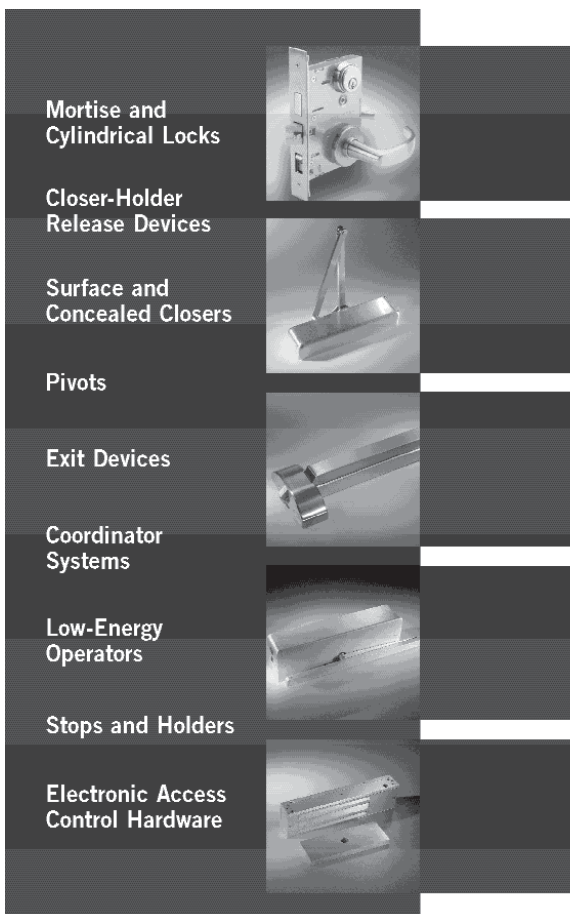
Slough Flooring, Inc. Since 1906

10 SOUTH 24TH STREET, HARRISBURG, PA 17103-2099
PHONE (717) 234-2664
FAX (717) 233-2819



Construction Specifications Institute
Central Pennsylvania Chapter
P.O. Box 3504
Harrisburg, PA 17105

FIRST CLASS MAIL



DORMA. The complete architectural hardware package.

- World's Largest Manufacturer of Commercial Door Controls
- First Door Closer Manufacturer to pass ANSI Grade 1 2,000,000 cycle test
- First Door and Hardware company to meet ISO 9000 criteria
- First exit device manufacturer to certify to 2,500,000 cycles
- First closer manufacturer to pass UL10C and U.B.C. 7.2 for positive pressure without special options
- Unprecedented 25-year warranty for Grade 1 closers and 10-year warranty for Grade 1 exit devices
- 8900 Grade 1 closer certified to 10,000,000 cycles
- Complete family of mortise and cylindrical locks
- Prompt deliveries, fair prices, and elevated customer support
- State-of-the-art manufacturing facility in Pennsylvania utilizes computerized and robotic equipment

For more details, contact:

DORMA Architectural Hardware, Dorma Drive, Drawer AC, Reamstown, PA 17567-0411
 Phone: 800-523-8483 • Fax: 800-274-9724 • e-mail: archdw@dorma-usa.com
 Website: www.dorma-usa.com

©2003 DORMA Group North America. All rights reserved. DORMA is a registered trademark of DORMA Properties, Inc.