

CHOICE

Volume 46
No. 8 rev. 2

April
2010



CENTRAL PENNSYLVANIA CHAPTER
CONSTRUCTION SPECIFICATIONS INSTITUTE

CHAPTER OFFICERS

Don Scruggs President
Jake Burkholder President-Elect
John Groff Vice President
Jan Myers Secretary
Rich Forsberg Recording Secretary
William Brightbill, FCSI Treasurer

DIRECTORS

Charles Beauduy 1 year
Paul Brunski 1 year
Jeff Snyder 1 year
Philip Frigm 2 years
Joel Altland 2 years
Chris Atwood 2 years

ADVISOR

John Cannon

EDITOR

Jeff Turicik

COMMITTEE CHAIRS

ACADEMIC AFFAIRS John Cannon
717-805-3533

ADVERTISING Jan Myers
717-238-4910

ARCHIVES John Morgan
717-817-2036

AWARDS Jeff Snyder
717-781-3995
Charles Beauduy
Co-Chair

BUDGET/ FINANCE Charles Beauduy
717-763-7212

BYLAWS Sid Myers
717-737-5391

CERTIFICATION Paul Brunski
717-263-8464

EDUCATION Rich Forsberg
717-397-3734
Don Scruggs
Co-Chair

ELECTRONICS Scott Steffan
717-329-4472

EXHIBIT SHOW Larry Saylor
717-697-1799
Charles Beauduy
Co-Chair

HOSPITALITY Logan Myers
570-850-6330

LONG-RANGE PLANNING Stu Cluck
717-887-3847

MEMBERSHIP Maria Weber
717-790-9261
Paul Brunski
Co-Chair

PROGRAM Jake Burkholder
717-564-6860
Chris Atwood
Co-Chair

PUBLICITY ROSTER Chris Atwood
717-233-4556

TECHNICAL John Morgan
717-817-2036
Phil Frigm
Co-Chair

INSTITUTE DIRECTOR

Mitch Miller 610-559-6000

JOINT MEETING

Tuesday, April 13, 2010

Construction Specifications Institute
&
Keystone Contractors Association

**"UNDERSTANDING THE CONTRACT DOCUMENTS
ENDORSED BY AGC"
Comparing ConsensusDOCS to AIA Documents**

Speaker: Dirk D. Haire
Read the Speaker Bio on page 3

*Spouses, guests and visitors
are welcome and encouraged to attend.*

**Radisson Penn Harris
Hotel & Convention Center**

1150 Camp Hill Bypass
Camp Hill, PA 17011

Board Meeting - 5:00 p.m.
All members are welcome to attend the Board Meeting

Attitude Adjustment - 6:00 p.m.
(Cash Bar)

Dinner - 7:00 p.m.

Program - 8:00 - 9:00 p.m.

Dinner Cost

CSI Members included In dues
Non-CSI Members \$25

Dinner reservations by noon, Friday, April 9, 2010

See **FROM THE CHEF'S TABLE**
for Menu and Reservation details.

The Central Pennsylvania Chapter meets
the second Tuesday monthly
except NO meetings are held in July or August.

*Please Read Ads On Our Website
They Support "Choice"*

www.cpc-csi.org

Inside the Choice

President's Message	2
Speaker for April Meeting	2
From the Chef's Table	2
Construction Code Update	3
2010-2011 Nominees	3
Accessibility in Recreation	3
Curmudgeon's Corner	5
Chapter Awards & Criteria	6
From the Editor's Desk	6
Exhibitors' Show	7
Meeting Minutes	8
Classified Ads	9
Calling All Reps!	9
Calendar of Events	9
CSINext	10

All material MUST be in the editor's hands no later than April 16, 2010 for publication in the May 2010 issue of "Choice".

Send to:
Jeff Turicik
251 Colonial Drive
Mechanicsburg, PA 17050
or email to:
jeffturicik@ykk-api.com

The Construction Specifications Institute is a nation-wide nonprofit technical organization dedicated to the advancement of construction technology through communications, education, research and service. Founded in 1948, CSI provides a forum for architects, engineers, specification writers, contractors, suppliers and others in the industry.

Anyone who is concerned with construction specifications in any manner is invited to apply for membership.
Contact: Maria Weber
Ph: 717-790-9261 or email
maria_weber@mcgraw-hill.com.



*Knowledge for
Creating and Sustaining
the Built Environment*



*Don Scruggs,
CSI, CCCA
President*

President's Message

I'm pleased to announce that our Chapter has received it's 10th CSI Outstanding Chapter Commendation Award (FY2009) therefore achieving silver status.

I would also like to note that one of our members, Jeff Snyder will receive Institute's Construction Technology Award at the National Convention in May. This award is for his article on Steel-Reinforced Plastic Trowel Blades. Congratulations Jeff!

In spite of a still slow economy the Chapter's 35th Annual Exhibitor's Show proved to be very successful thanks to all the hard work and effort by that Committee. Also, a special thanks to Sandy Beauduy and Mary Brunski

for volunteering to man the registration desk during the show.

Just a reminder that two important CSI events are quickly approaching. First is L.O.S., a Region event which will held at the Radisson in Camp Hill on April 16 and 17. Next is the CSI National Convention on May 11-14. Early registration deadline for the National Convention will end on April 8, 2010. Please mark your calendar and register soon for these events if you have not done so.

Hope to see you all at the April meeting,

*Don Scruggs, CSI, CCCA
President*



*Dirk D. Haire,
Speaker*

Speaker for April Meeting

Our speaker, **Dirk D. Haire**, practices in the areas of construction law and government contracts, with a focus on federal construction law. In the industry, Dirk serves on the boards of directors of the AGC of America and the AGC of Maryland. He also currently serves as vice chair of the AGC of America's Service and Supply Council. *Chambers USA* has ranked Dirk as a leading lawyer in construction law the past three years, most recently describing him in their 2009 Guide as "an excellent communicator with exceptional business understanding."



*Logan Myers
Hospitality Chair*

From the Chef's Table

MENU

*Choice of
Sliced Roast Top Sirloin or
Pecan Encrusted Chicken*

*Fruit Salad,
Caesar Salad and
Chef's choice of Dessert*

*Special Dietary menus,
such as vegetarian,
low fat or low sodium,
are available upon request.*

In addition, we will try to accommodate special requests such as vegetarian, low fat or low sodium selections. A fresh fruit plate, instead of the Chef's Dessert Selection, is always available by request. Special request menu reservations should be made no later than the Friday prior to the Tuesday meeting.

Please feel free to forward either your comments regarding your meal, or any suggestions that you feel could improve the CPC-CSI dinner, to: loganmyers@hotmail.com.

*Logan Myers
Hospitality Chair*

RESERVATIONS

to Logan Myers by calling 570.850.6330 or e-mail at loganmyers@hotmail.com or use our on-line registration form at www.cpc-csi.org

YOU MUST MAKE RESERVATIONS OR CANCEL STANDING RESERVATIONS by NOON, FRIDAY, April 9, 2010.

ALL NO-SHOWS WILL BE BILLED.

Entrée selection should be made when making a reservation. First entrée listed is the default selection if no choice is made.

To schedule a Table Top Display, call Jan Myers at 717.238.4910 or use the form in Choice or online.

Attendees should make an entrée selection when reservations are placed.

(Please note that the first entrée listed will be the default selection if no choice is made.)

PA Uniform Construction Code Update



Don Scruggs,
CSI, CCCA
President

L&I's final-omitted regulatory package adopting the 2009 versions of the International Code Council's family of codes was approved on Dec. 10, 2009 with an effective date of December 31, 2009.

On March 1, 2010 a hearing on the Pennsylvania Builders Association's petition for an injunction barring the use of the 2009 International Codes was heard in Commonwealth Court with no decision made at that time. On March 10, 2010, Commonwealth Court Judge Johnny J. Butler denied the Pennsylvania Builders Association (PBA) request for a preliminary injunction enjoining the Department from enforcing its regulation adopting the 2009 International Codes. As a result of this decision, the 2009 ICC Codes will remain in effect in Pennsylvania.

Don Scruggs, CSI, CCCA
CPC/CSI President

CPC CSI Election of Officers & Directors for 2010-11



Jake Burkholder,
Nominating
Committee Chairman

The Nominating Committee consisting of Jake Burkholder (chairman), Don Scruggs, Larry Saylor, John Morgan, Charles Beauduy & Jeff Snyder submit the following slate of 2009-10 Board Members for consideration by the Chapter membership:

<u>Position</u>	<u>Name</u>
President	Guy Burkholder
President-Elect	John Groff
Vice President	Jan Myers
Secretary	Scott Steffan
Recording Secretary	Mark Thirkeldson
Treasurer	William Brightbill
Director – 2 year	William Deck
Director – 2 year	Larry Saylor
Director – 2 year	John Cannon
Publishing Editor	_____ (appointed by President; approved by the Board)
Advisor	Don Scruggs (immediate past president)

Continuing Directors for 1-year terms:

- Director – 1 year Philip Frigm
- Director – 1 year Joel Altland
- Director – 1 year Chris Atwood

Nominees for the positions open for election (listed in **bold italics**) will be placed on a ballot for election to occur at the April 13, 2010 Chapter Meeting. Additional candidates may be nominated from the floor prior to the election.

Accessibility in Recreation: Getting in the Game



Philip Frigm,
CSI, CCS,
Technical
Committee
Co-Chairman

Kimberly Paarlberg,
RA, ICC Senior Staff Architect

[This article originally appeared in the December 2009 issue of Building Safety Journal, copyright International Code Council, and is reprinted with permission.]

Accessibility requirements primarily exist to allow equal access to all the places where people want to live, work and play. Current building codes address viewing events at recreational facilities with assembly seating requirements (including team and

player seating); what the codes are branching out into is access to participation in the recreation activity itself.

New in the 2009 ICC A117.1 *Accessible and Usable Buildings and Facilities* will be an entire chapter on how to construct accessible recreational facilities. For example, if someone built a swimming pool under the current requirements in *International Building Code* (IBC) and ICC A117.1, an accessible route would be required to the edge of the pool; however, there are currently no provisions for getting into the water. The 2009 edition will provide technical criteria on options for how to get into the pool. The 2009 edition of ICC A117.1 will be available mid-2010 and will include provisions for a variety of recreational facilities from

(Continued on page 4)

(Continued from page 3)

the point of view of the participant, not just the observer. The 2009 edition, however, will not require accessible routes for every player position at an area of sports activity. The idea is that someone can get to a recreational facility, but participation in that event will depend on his/her own abilities.

The following is a general idea of the new technical requirements, i.e., the how to, in the 2009 ICC A117.1.

Definitions and Safety Standards

The new code defines the various types or components of recreational facilities, such as "areas of sports activity," "catch pool," "play area," etc. It references safety standards for playground equipment and the surfaces around them.

General

Areas of sports activities (playing fields, courts, pools, etc.) are required to be on an accessible route. The play areas are required to be accessible to the extent prescribed in the IBC and ICC A117.1. There is an exception for raised structures used for refereeing, judging or scoring – like the umpire on the tall chair at a championship tennis match. Animal containment areas that are not open to the public are not required to be accessible – such as the stables at a trail guide horse-riding establishment. In bowling alleys, only a percentage of lanes are required to be accessible, since all lanes provide the same activity.

Amusement Rides

The requirements address access to amusement rides for persons with disabilities, including persons who use wheelchairs. Either accessibility specifications offer options for a wheelchair space on the ride or a ride seat or device designed for transfer to the ride. There are exceptions for rides: 1) operated by the rider, 2) designed primarily for small children, or 3) not equipped with seats. Amusement ride requirements are not applicable to portable rides, such as those at a carnival or county fair.

Boating Facilities

Gangways and floating piers that serve recreational boating facilities must be able to serve as part of an accessible route. The dynamic interface between land and water presents unique and significant challenges in providing access to floating facilities. The key challenge is the vertical variations caused by changes in water levels due to tides and seasonal water levels. Criteria for gangways consider this. There are exceptions for maximum rise, slope, handrail extensions and level landings. Sloped accessible gangways are not required to be longer than 80 feet. There are specifics for clearances at accessible boating slips.

Exercise Machines and Equipment

Clear floor spaces at accessible exercise equipment must allow for transfer from a wheelchair to the piece of exercise equipment.

Fishing Piers and Platforms

The code treats the route to fishing piers and platforms the same as boating facilities. When the facility provides barriers or railings, it must position a portion of it at a height of 34 inches or lower to allow for someone using a wheelchair to be able to fish over the rail. Where guards are required for safety, the lowered portions are not required. At the fishing locations, an edge pro-

tection of at least 2 inches in height must be provided to prevent the wheels of mobility aids from slipping over the edge.

Golf Facilities

One can typically achieve access to golf courses with golf carts. The code permits these carts as an alternative to providing accessible routes throughout golf courses. Courses must be designed so the golf carts can access teeing grounds and putting greens. Accessible routes are required to other areas such as practice greens, driving ranges, cart rental areas and bathrooms.

Miniature Golf Course

At least half of the holes in a miniature golf course must be on an accessible route. Requirements allow for miniature golf design conventions such as curbs. All level areas of an accessible hole where a ball may come to rest must be within 36 inches of the route so that someone can reach the ball with a club.

Playgrounds

Playground access is required in facilities such as those at schools, parks and daycare facilities (not including daycare facilities in a private home). Portions of playground equipment must be on an accessible route and allow children to either play while still in their wheelchairs, or have a transfer surface so they can move up into the equipment. Requirements include provisions for the number of play components required to be accessible, accessible surfacing, ramp access, transfer systems to access elevated structures, and access to soft, contained play structures.

Swimming Pools, Wading Pools, Hot Tubs and Spas

The size of the pool determines the number of accessible pool entry points. All pools must have at least one accessible point of entry. Larger pools (those with 300 or more linear feet of pool wall) must have two entry points. Options include pool lifts, sloped entries, transfer wall, transfer stairs or ramp access. The standard makes allowances for wading pools, spas, wave action pools and other types of pools where user access is limited to one area. There are exceptions for water slides, diving boards, diving platforms and the associated catchment pools.

Shooting Facilities with Firing Positions

Shooting facilities must provide a level surface for a 60-inch turning space to make a firing position accessible.

Scoping

IBC 2009 Sections 1104.2 and 1109.14 provide the current scoping requirements (i.e., what, where and how many) for the route to and requirements for recreational facilities. A code change proposal, E152-09/10, from Marsha Mazz, representing the Access Board, was heard at the ICC code change hearings in Baltimore last month. The intent is to provide additional scoping for the broader range of recreational facilities not addressed in the 2009 ICC A117.1. The proposal mirrors the requirements in the 2004 American's with Disabilities/Architectural Barriers Act (ADA/ABA) Accessibility Guidelines. At this time, the Department of Justice (DOJ) has not yet adopted the new federal requirements. The hearing results are posted on the ICC website at www.iccsafe.org/cs/codes.

(Continued on page 6)

Curmudgeon's Corner

Moving On

by Sheldon Wolfe, RA, FCSI, CCS, CCCA

We just went through another round of bylaws amendments, and unless we decide to throw everything out and start over, we should be about done. The reason behind many of the amendments goes back to the governance initiative recommended by the Board and approved by the members just a couple of years ago. As you may recall, one of the biggest changes was to reduce the board of directors from twenty-nine members to eighteen. We're well on the way now; we soon will be down to twenty board members.

The intent of the governance amendment was to create a smaller board, one that would be more nimble, more efficient, and more forward thinking. With that in mind, let us consider two Board activities: creation of a new committee to oversee the way members use their dues, and expanding CSI's visibility and influence through increased participation of corporations.

Region Allocation Program Oversight Committee

Along with the reduction in size of the Board came a division of responsibilities. Institute Directors now will focus primarily on matters pertaining to operation of the Institute, while operation of the regions, formerly part of the Institute Directors' duties, now is delegated to the regions. This created a problem; while Institute Directors had annual travel budgets for visiting chapters, region officers would now have to find other sources of funding for region business.

The response was the Region Allocation Program (RAP). Under this new program, regions no longer have to rely on chapter assessments for operating funds. Instead, the Institute sends a percentage of the basic membership dues directly to the regions. At one stroke, this addressed three problems: the lack of funding for region travel, the difficulty of collecting assessments, and the "missing" income that was not collected from at-large members. This is essentially the same process used for chapter dues - the Institute collects chapter dues, then sends the money to the chapters. As far as I know, this system has worked well for a long time without any special attention.

However, it was decided that the transfer of funds to regions required supervision by the Institute, and a Region Allocation Program Oversight Committee was formed, the intent being to "administer the Region Allocation Program (RAP) and evaluate the program's effectiveness." The oversight committee has since

been quizzing regions and chapters, trying to figure out what's going on in chapters and regions.

In either case, is it not the members' money, to be used as the regions or chapters determine? The Region Allocation Program was a good idea, but do we need an oversight committee to decide if regions are spending their money wisely?

Increased participation of corporations

Another topic, which our board of directors has discussed many times, is corporate participation in CSI. To put this in the proper perspective, our bylaws state that "Firms or corporations are not eligible for membership" and I certainly don't want to try to change the bylaws to allow corporate membership. However, it seems that we should be able to allow companies to participate in CSI without being corporate members, and to show their participation through use of the CSI logo and some expression of their relationship with CSI. This would benefit both the company and CSI by showing the company's support and by making CSI more visible. AIA and USGBC have shown the value of cooperation between companies and organizations; it's time CSI stopped trying to ignore the importance of those companies that pay the bills.

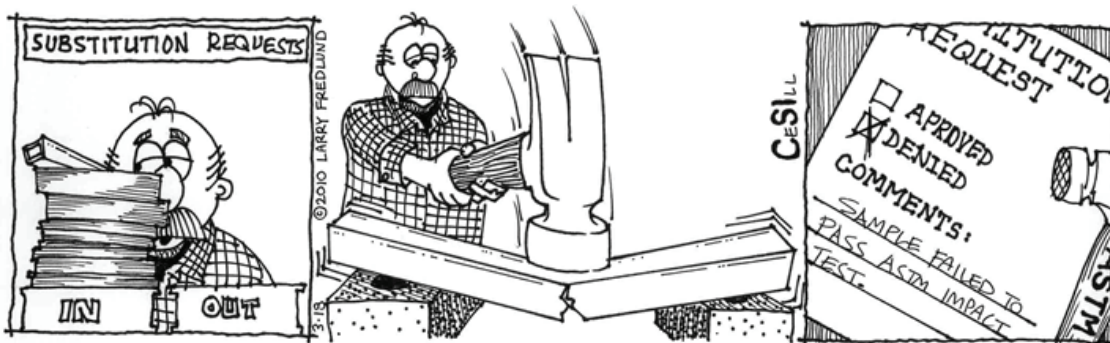
We often have lamented the fact that while ordinary people are aware of AIA, they have no idea what CSI is. And in only a few years, USGBC has become possibly the most-recognized construction organization. Should CSI pursue greater participation by companies? Should corporate participation be acknowledged by allowing companies to display the CSI logo? Isn't it time to gain more visibility by promoting CSI through every means possible?

Express your opinion!

How are the Region Allocation Program and corporate participation related? They're not, but members should take advantage of this year's annual meeting to express their views on these subjects. Given a choice between the two, members will be better served by more visibility and recognition than by an oversight committee. And I believe it is a choice. Board members have only so much time, and the total time available is much less than what it was. It is more important than ever that the Board focus on those things that will make CSI more important and attract new members, and avoid activities that sound good but do not contribute to the mission.

While it is too late to submit a resolution, these and other issues still may be brought to the annual meeting as "Other Business." The governance amendment made it possible to bring meaning to the annual meeting, so take advantage of it to tell your board of directors what you think is important!

© 2010, Sheldon Wolfe



Chapter Awards and Criteria



*Jeff Snyder
Awards Committee
Chair*

Chapter awards are presented at Chapter Awards meeting on June 9th. The Awards Committee would like to receive nominations from the members for these awards. Please take the time to go through the following list, select one or more of your fellow members or organizations for a much-deserved award.

Chapter Certificate of Appreciation:

Awarded to an individual who has rendered distinguished service to the Chapter in advancing the objectives of the Institute or the Chapter.

Chapter Organizational Certificate of Appreciation: Awarded to a firm or organization for distinguished accomplishments which promote the objectives of the Institute or the Chapter.

Chapter Cooperation Award: Awarded to a trade organization, traded union, contractor association, or professional association for exceptional liaison work with the Chapter.

Chapter President's Certificate: Awarded by the Chapter President, at the discretion of the President, for exceptional work performed on behalf of the Chapter.

Chapter Special Proficiency Award: Awarded to a professional member attaining special proficiency and outstanding stature as a practicing specification writer.

Chapter Citation: Awarded to an individual firm or organization for some outstanding accomplishment in specification writing.

Chapter Education Award: Awarded to an individual or organization that has made significant educational contribution in areas related to the purpose of the Institute or a significant contribution to the educational programs of the Chapter or the Institute.

Chapter Technical Award: Awarded to an individual, firm, or organization that has made a significant contribution to the technical program of the Chapter or the Institute.

Special Awards: The Chapter President and the Board of the

Chapter, at their sole discretion, may present any special awards as may promote the purpose of the Institute or the Chapter.

Chapter Craftsmanship Award: Awarded to an individual for superior craftsmanship, with the purpose of recognizing such outstanding craftsmanship in the construction industry within the Chapter's area.

The Rolf G. Loddengaard Award: Awarded to those members with 20 years of membership in CSI who continue to be active contributors to the Chapter and who best exemplify those ideals promoted and propagated by the late Rolf G. Loddengaard, FCSI, CCS.

Special Spouse's Award: Awarded to those members spouses who through their patience, understanding and devotion to their spouse, have contributed both to their spouses performance in behalf of the Chapter and to the principles of the Institute.

Academic Affairs Certificate of Appreciation: Awarded to an individual, firm, or organization for advancing the objectives of the chapter and the student affiliate.

This award shall have no limit on the number to be presented each year and may be awarded to either a CSI member, firm, Trade association, organization or others who have shown a commitment to advancing the objectives of the Chapter and / or the student affiliate.

Leroy S. Kimmons Award: Awarded to a CSI member for distinguished service and exceptional support toward the student affiliate. Through his/her outstanding commitment, this recipient's effort has set forth a high standard in advancing the objectives of the student affiliate.

One award may be given each year to a CSI member who has shown a commitment in advancing the objectives of the student affiliate.

Please send nominations for the above awards as soon as possible to Jeff@wagmanmetal.com by April 30th.

*Jeff Snyder, Awards Committee Chair
Charlie Beauduy, Awards Committee Co-Chair*

From the Editor's Desk



*Jeff Turicik
Editor*

The Central PA Chapter dues include all meals for the chapter program dinner meetings for the year.

Come out to our meeting to network, socialize, and learn about timely subjects in the Construction Field.

(Continued from page 4)

Conclusion

The 2009 ICC A117.1 should be available in print by mid-2010. The requirements described above will be applicable for new construction and renovated facilities once jurisdictions adopt 2009 ICC A117.1. The 2012 IBC will reference the 2009 ICC A117.1.

Architects and facilities owners who follow the requirements in the 2009 ICC A117.1 before jurisdictions adopt it will be ahead of the game. It will provide better accessibility, and reduce the cost of future alterations, which is of great benefit. After all, who doesn't love to play!

(CPC-CSI Contributor: Philip Frigm, CSI, CCS, Technical Committee)



Larry E. Saylor,
CSI, AIA, NCARB
Exhibit/Show
Chairman

2010 Thirty-Fifth Annual Camp Hill CSI Exhibitors' Show

More than 530 architects, engineers, contractors, facilities manager's, exhibitors, and building owners attended the 35th Annual Exhibitors' Show at the Radisson Hotel & Convention Center, Camp Hill on March 17, 2010. In addition to the exhibitors' booths, four seminars were arranged by the Chapter Education Committee under Chair Richard Forsberg, CSI and CCCA. The Seminars started at 9:00 A.M. and continued until 4:30 P.M. The Exhibits Show was open from 11:00 A.M. until 6:00 P.M. Refreshments were available all day and door prize drawings were held on an hourly basis.

Following is a list of the door prizes and the lucky recipients:

- Robert Schiefer – Folding Chair
- Jake Burkholder– Rolling Coder
- Keith Orth – Water Bottle
- Chuck Romieh – Golf Towel
- Steve Stanct – Briefcase
- Michael Katz – Dozen Golf Balls

Following is list of exhibitors who participated in the Camp Hill Show:

Acurlite Structural Skylights, Inc.; A & L Doors & Specialties; All Seasons by Pickott Agency; American Subcontractors Association of Central PA; Apex Urethane Millwork; Atas Industries, Inc.; BASF Building System; Beavertown Block Company, Inc.; Bethlehem Precast, Inc.; BWI/Haworth/Interface Floor.; Certain Teed Corporation; C. H. Briggs; Commercial Roofing Solutions; Conestoga Ceramic Tile Distributors; Construction Resource Alliance of Central PA; CSI; Cumberland Stained Glass; Daltile; Durex Coverings, Inc.; Eldorado Stone; Fessenden Hall of PA/ Wilson Art; Firestone/Performance Group; Glen-Gery Corporation; Guardian Industries, Harrisburg Area Community Collage; HVAC Distributors, Inc; Pella Windows & Doors; Hostetter Supply Co., Inc.; IFMA; Jan Myers & Associates; Keith Bush Associates, Inc.; Light Styles, Ltd. Marvin Windows; L & M Construction Chemicals; Manning Materials Corp.; MCACP; McGrory Glass, Inc.; McElroy Metals, Inc.; Mid-Atlantic Agents, LTD; Modernfold of Reading, Inc.; National Gypsum Company; Nitterhouse Masonry Products; New Holland

Concrete; Parex USA; Pierce-Phelps, Inc.; Parksite/Azak; Quality Roofing Supply Company; Reed Associates; Sika Corporation; R. D. Smith Associates, Inc.; Roland & Roland, Inc.; Soundseal/CISCO, Inc.; The Sherwin-Williams Company; Turbo-Tek Restoration, Inc.; Trenwyth Industries; Tri-Boro Construction Supplies, Inc.; U.S. Gypsum/Cisco, Inc.; V & S Lebanon Galvanizing, LLC; Warehouse Bay Corporation; Watsontown Brick Company; Wolfarth & Associates; W. R. Grace & Company; York Building Products Company; YKK AP America.

Awards:

- *Larry N. Shoemaker Best of Show* – Turbo-Tek Inc.
- *Best Multiple Booth* – Fessenden Hall of PA, Inc/ Wilson Art
- *Honorable Mention Multiple Booth* – Hostetter Supply Co., Inc.
- *Best Single Booth* – Bethlehem Pre-cast, Inc.
- *Honorable Mention Single Booth* – Apex Urethane Millwork



Refreshment Sponsors:

Beavertown Block Company, Inc
CGC Cumberland Geosc/Ence Consultants
Durex Floor Coverings, Inc.
Firestone Building Products Company
c/o Performance Roofing Associates
Glen-Gery Corporation
Lehigh Cement Company
MCACP
Modernfold of Reading, Inc.
Nitterhouse Masonry Products
Novinger Group, Inc.
Trenwyth Industries, Inc.
York Building Products Company, Inc.

The Central Pennsylvania CSI Chapter and Show Committee thanks all Exhibitors' for there participation in this 2010 Thirty-Fifth Annual CSI Exhibitors Show. We thank all of the participants who attended this event that have take time out of there schedule to attend this event.

Minutes of Board of Directors Meeting

Date: March, 2010

Time: 5:00 pm

Location: Radisson Hotel,
Camp Hill, PA

The Board of Directors of the Central Pennsylvania Chapter of the Construction Specifications Institute met in the offices of Gannett Fleming, Inc. in Camp Hill, PA on March 9, 2010. President Scruggs, called the meeting to order at 5:05 p.m. Board members and committee chairs present were: Atwood, Beauduy, Burkholder, Cluck, Frigm, Groff, Morgan, Saylor, Scruggs, Snyder, and Steffan.

Opening Comments:

1. President Scruggs opened the meeting. It was reported that longtime member Sid Myers had in intensive care for 10 days at Holy Spirit Hospital. President Scruggs noted that he had the agenda for LOS.

Approval of Minutes:

2. A motion to approve the February minutes was not moved by the Board due to the lack of a quorum early in the meeting.

Treasurer's Report:

3. Treasurer Brightbill was not present, and the Chapter's budget and accounts were not discussed. President Scruggs noted that reimbursement forms for LOS and the Institute's Convention in Philadelphia were completed.

4. Officer's Reports:

5. President-Elect: No report.

6. Vice President: Vice President Groff reported that Institute will be publishing MasterFormat 2010 in the next few months.

7. Secretary: No report.

8. Past President/Advisor: No Report.

Editor's Report:

9. Editor Turicik was not present, so there was no report.

Committee Reports:

10. Academic Affairs: No report.

11. Advertising: No report.

12. Archives: No report.

13. Awards: Chairman Snyder reported that the Central Pennsylvania Chapter has received its 10th Outstanding Chapter Commendation, qualifying the Chapter for Silver Status. It was also noted that the patented invention invented by Jeff Snyder also won the Construction Technology Award from Institute. Chairman Snyder requested that the committees put the information for their parts together for the Outstanding Chapter Award. Chairman Snyder reported that the criteria for applying for Chapter Awards is in Choice.

14. Budget/Finance: No report.

15. Bylaws: No report.

16. Certification: No report.

17. Education: It was reported that 6 people have registered for the seminars at the Exhibitor's Show.

18. Electronics: Chairman Steffan corrected his email address to Scott@svlsolutions.com.

19. Exhibit/Show: Chairman Saylor reported that 63 booths have been sold for the Exhibitors Show scheduled for March 10th at the Radisson Hotel in Camp Hill. This show will be the 35th anniversary Exhibitors Show. It was reported that 860 attendees attended last year's show, and that 3800 invitations were sent out.

20. Hospitality: No report.

21. Long Range Planning: No report.

22. Membership: No report.

23. Program: Chairman Burkholder reported that May's Program will be a tour of the Judicial Center in Harrisburg

24. Publicity: The information for the Chapter's Exhibitor's Show was sent out.

25. Roster: Chairman Atwood reported he is still working on the roster.

26. Technical: Chairman Frigm reported that he is submitting an article "Accessibility in Recreation: Getting in the Game" for publication in Choice. All copyright approvals have been obtained.

Directors:

27. Jeff Snyder noted that a suggestion to put the word "Choice" in a header or footer on the webpage would help with the application for the Outstanding Chapter Award. He also circulated a Directory by Section: Specifier's Buyers Guide produced by the Minneapolis Chapter for consideration as a model for a similar Guide our Chapter may decide to consider.

Old Business:

00.00 There is no old business

New Business:

03.01 Vacant Offices

President Scruggs noted that the nominees for the post of Secretary and 2 Directors were vacant. Scott Steffan was recruited to run for the open Secretary post. With Sid Myers hospitalized, the Bylaws Committee Chairmanship will probably be vacant. Chris Atwood volunteered to fill the Education Committee Chairmanship.

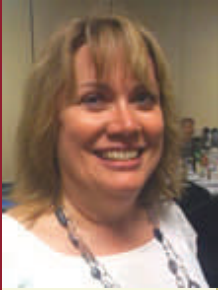
03.02 Regional Conference Assessment

The \$1500 contribution approved last month to cover the Regional assessment to fund the Regional Conference in Annapolis was determined to be less than the \$1800 the Region is now requesting. The Chapter will solicit sponsorships from Industry members and others to make up the shortfall, or to reduce the Chapter's contribution.

*John H. Groff, PE, CSI, CCS
Acting Recording Secretary*



*John H. Groff,
PE, CSI, CCS
Vice President*



*Jan Myers,
Advertising Chair*

CHAPTER ADDRESS

P.O. Box 3504
Harrisburg, PA 17105

TELEPHONES

Secretary
717-238-4910

Treasurer
717-234-1650

Editor
717-763-6818

Ads
717-238-4910

CHOICE STAFF

Editor
Jeff Turicik

Advertising
Jan E. Myers

Roster
Chris Atwood

Calling All Reps!

Would you like to highlight your company or a special product? Do we have a deal for you. For a mere \$125-\$150 you can display your wares during the social time and have 10 minutes of everyone's attention during dessert at one of our CPC/CSI dinner meetings. What an awesome opportunity to hit several specifiers at once. If you are a member of this chapter, it will cost \$125. If you are not, it will cost \$150. For more details, see the CPC-CSI.org website. To schedule a table top, call Jan Myers at 717.238.4910. Thanks!

*Jan Myers
Advertising Chair*



**Central Pennsylvania Chapter of the Construction Specifications Institute
Table Top Display Registration**

Name/Contact: _____

Company: _____

Meeting Date: _____

Telephone: _____ E-Mail: _____

Cost: \$125 members /\$150 non-members (does not include meal)

Fee Includes:

1. One 72 x 30 inch table to display product.
2. Display time: 6:00 - 7:00 P.M. (During social hour)
3. Presentation: 10 minute presentation during dessert.
4. Electrical: Outlets available. Vender supplied extension cords.

Contact: _____

CPC _____ Committee

717- _____ - _____

Contact Jan Myers at 717.238.4910 if interested in attending the Region LOS seminar at the Radisson Hotel on April 16th and 17th.

Calendar of Events

March 29 - April 3, 2010
Certification exams

April 13, 2010
CSI Central Pa. Chapter
Dinner Meeting & Program - "Consensus Documents"

April 16-17, 2010
CSI Middle Atlantic Region - Leadership Orientation Seminar (LOS), at the Radisson, Camp Hill, PA. Go to www.mar-csi.org for event information. Contact Jan Myers at 717.238.4910 if interested in attending

May 18, 2010
CSI Central Pa. Chapter
Tour of PA Judicial Center & Dinner

May 11-14, 2010
CSI 54th Annual National Convention & Hanley Wood Exhibitions Construct 2010 – "Foresight is Power," co-located with the TFM Show, Pennsylvania Convention Center, Philadelphia, PA. For event information go to www.constructshow.com.

June 8, 2010
CSI Central Pa. Chapter
Dinner Meeting & Program
"Annual Awards Program"

June 10-12, 2010
AIA – 2010 National Convention & Design Exposition, "Design for the New Decade," Miami Beach Convention Center, Miami, FL.

No Meeting in July and August

September 23-26, 2010
CSI Middle Atlantic Region Conference,
"Preserving Our History," Annapolis, Maryland, at the Historic Inns of Annapolis. For event information go to www.marc2010.org. Hotel reservations can be made at telephone (410) 263-2641; ask for "CSI Conference" rate.

Oct, 17-19, 2010
USGBC Greenbuild 2010 International Conference and Expo, Chicago, Illinois. For event information go to www.greenbuildexpo.org

Classified Ads

To place classified ads, please submit your ad to the editor, Jeff Turicik, jeffturicik@ykk-api.com for insertion in "Choice" and on cpc-csi.org.

Article added April 5, 2010



Daniel Hargreaves

CSINext

By Daniel Hargreaves, CSI, RAS

“The meeting’s too far
It’s not convenient,
My family comes first...”

CSINext – A Virtual Chapter!

The holidays are over and it is time for a changing of the guard... digital guard that is.

At the November 17, 2009 CSI Board Meeting, the first virtual chapter was chartered, named **CSINext**, the brain child of CSI Member Brent Williams. With social media storming through the internet like wild fire, CSINext is the next evolution of the CSI chapter.

You may be familiar with Blogging, Facebook, and Twitter which is social networking. This is where **CSINext** comes in, taking the traditional chapter model to the digital world via social networking. Basically, allowing access to potential CSI members all over the world.

The chapter can be found at <http://www.csinext.org>

On February 16, 2010 the acting **CSINext** board held its first meeting. The Board Members include: Daniel Hargreaves, Joy Davis, Bryan Varner, Robert Dye and Blake Wagner were present. Not present were Robert Mallory, Lauren Paulson and Brent Williams.

Brent Williams' resignation, in writing, as president was regretfully accepted. Bryan Varner made a motion to appoint Daniel Hargreaves as President for the rest of FY2010. Robert Dye seconded the motion and the motion passed. The other officers are President Elect – Robert Mallory, Secretary – Bryan Varner, Treasurer – Robert Dye. Board of Directors – Lauren Paulson and Blake Wagner.

The chapter's goal is to establish a social network that strives to function just like a traditional chapter. Once a member logs in, the first thing each member needs to focus on

building is their profile. This is a snapshot of the members information that they will need to fill in as they see fit, including a place to upload a picture of themselves. Just like any good chapter, it always helps to place a face to a name. The user list lets each member visit each other's profile; also the last five members to visit are listed on the home page. Each member has access to the Private Messaging System. Think of this as a local email account. This is feature rich and integrated with the member's profile. What this does is if the member visits the User List and clicks on a name, there are several new options for sending a message to another member. They can use the Quick Message or select Private Message. Then just type away and hit send to begin communicating amongst each other. They can also post comments on the Wall, basically a way to talk out loud in the room for all to hear (or in this case to be seen).

Another feature is Article Comments. At the bottom of each article is a comment box. Sharing of comments, thoughts and ideas is one of the best ways to interact with each other. All the user will need to do is login, go to the article and at the bottom add their comment. Then hit send... have you noticed in the computer world everything requires you to hit send. There are other features such as an event calendar, photo gallery, guest books, and article and web link submission.

The focus of the chapter is communication and networking. Having a web presence allows for everyone to access the CSI community.

Daniel Hargreaves, CSI, CDT, RAS, is a member of CSI since March of 2000. He was President of the Dallas Chapter in 2005, Institute Director in 2006-2009 and President of the South Central Region in 2010. He is the current electronics' chair for the Dallas Chapter. He has authored several websites for CSI chapters and businesses. He has been in Architecture over 25 years. His day job is Project Manager for MPI Architects located in Dallas, Texas.

PG 2010 - 5